

#### BEFORE YOU START

KLH5055 suits 500mm standard cabinet width.

KLH5560 suits 550mm standard cabinet width.

KLH6000 suits 600mm standard cabinet width.

1

Measure and mark the location where the inner runners will be installed.

2

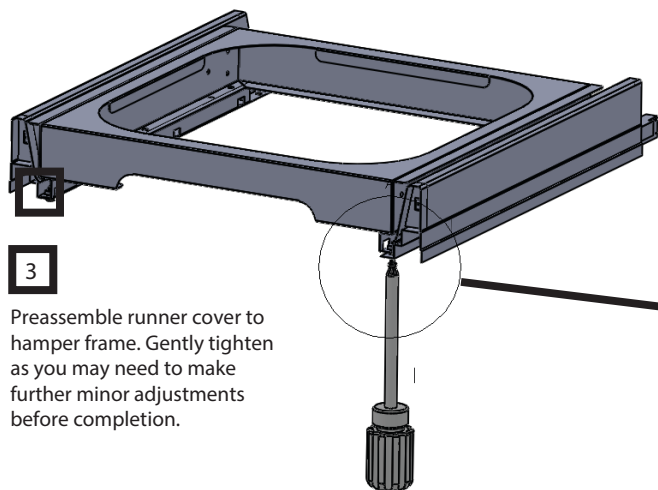
Once mounting positions have been accurately marked, use two self tapping screws to secure in each runner.

#### ASSEMBLY KIT

- Screws (8g x 5/8 csk) x 12
- Screws (M5 x 12mm) x 8

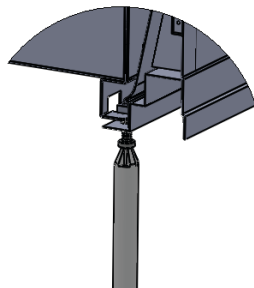
#### TOOLS REQUIRED

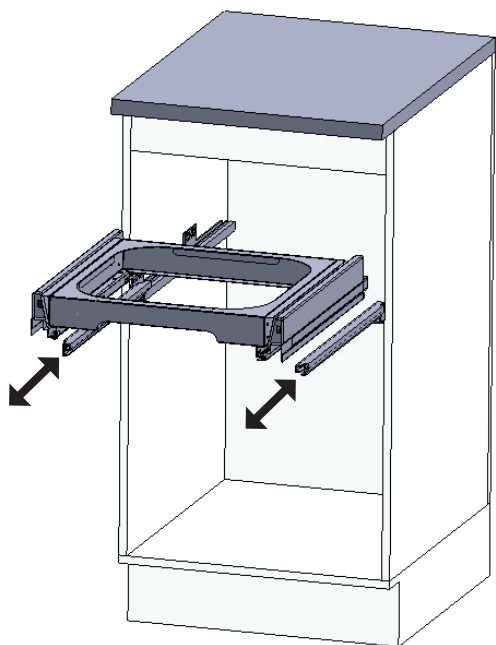
- Philips head screwdriver
- Drill & 2mm Drill bit



3

Preassemble runner cover to hamper frame. Gently tighten as you may need to make further minor adjustments before completion.



**4**

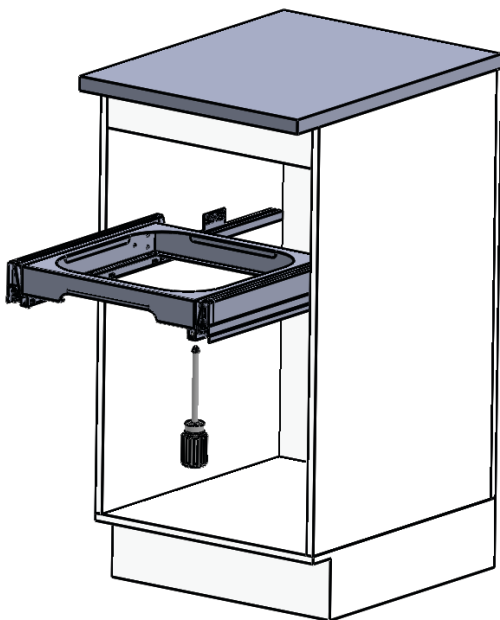
Pull each side of the inner runner out as shown. Place assembly frame runner cover over runners.

Once both are in place gently push hamper frame back until you hear it click in place.

Move laundry frame in and out to ensure the runners have a smooth movement. If the movement isn't as desired then adjust before proceeding to the next step.

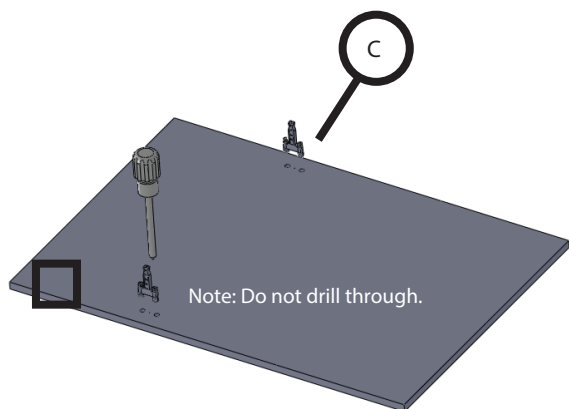
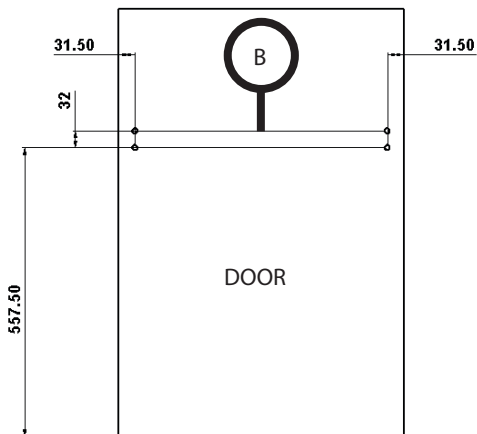
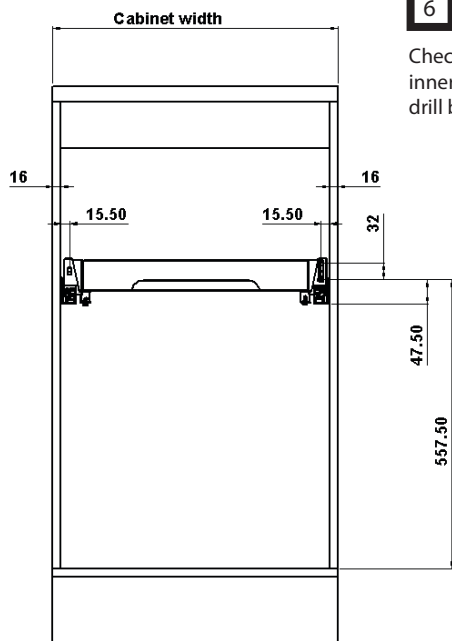
**5**

Once you are satisfied with the runner movement, tighten all screws as shown.



6

Check and mark the height of the screw positions in the inner cupboard door, as shown (figure B). Use a 10 mm drill bit and drill 10mm deep.



Note: Do not drill through.

7

Insert front fixing brackets as shown (figure C). Use a Phillips screw driver to secure fixing bracket to door.

**8**

Align and fit the two fixing brackets to the runner slots. Once in place, push door and runners back inside the cabinet until you hear the runners click in place.

For further adjustments refer to smooth runner instruction sheet.

