



1 Measure out installation dimension of access panel.



2 Mount installation dimension + 6 mm cut end on the desired spot. Make sure that the angle is 90°.



3 Saw out installation opening using a knife or a jigsaw. Precise working means less post-treatment afterwards.



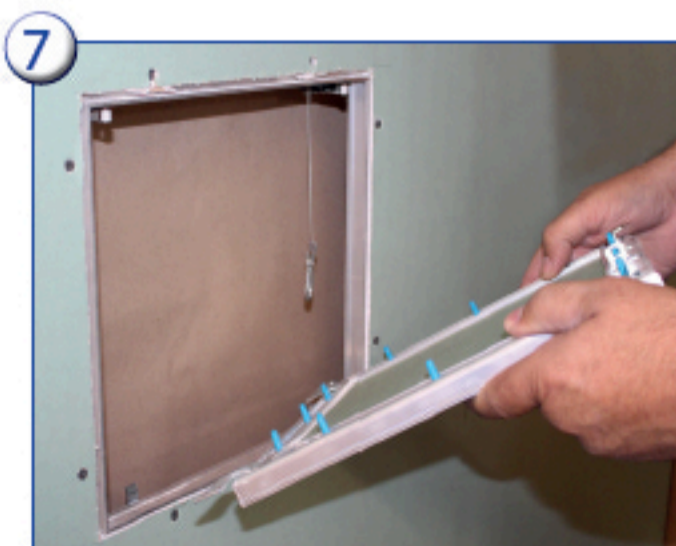
4 Pass frame diagonally through the cut-out.



5 Adjust frame.



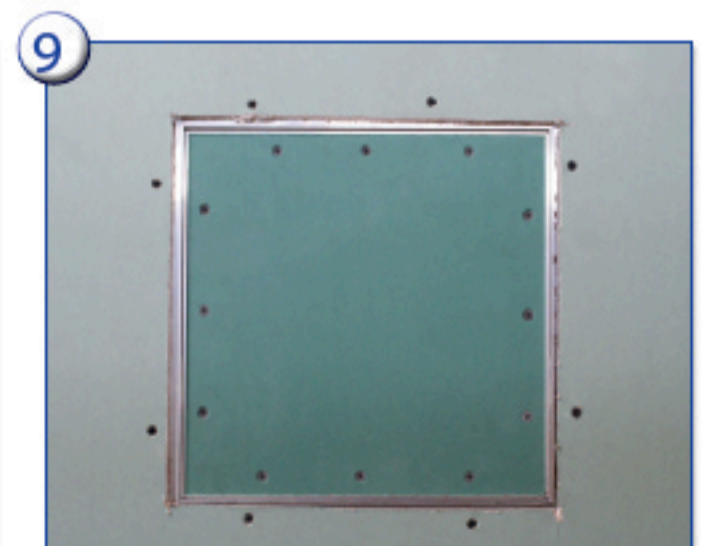
6 Fix frame.



7 Hook in door leaf.



8 Secure door leaf with retaining cable.



9 Close door leaf. Fill wall and door leaf separately.